

Erfreute Zeit im neuen Bunde

Now covenant, most joyful season

BWV 83

Organo

1. Aria (Alto): Erfreute Zeit im neuen Bunde

Johann Sebastian Bach

1685 – 1750

Basso continuo

f

6

3

7

6

6 4

6 4

5

6 5

9

7

6 5

7^b

6 5^b

6

Aufführungsdauer / Duration: 19 min.

© 1985/1992 by Carus-Verlag, Stuttgart – CV 31.083/49

Vervielfältigungen jeglicher Art sind gesetzlich verboten. / Any unauthorized reproduction is prohibited by law.

Alle Rechte vorbehalten / All rights reserved / 2017 / Printed in Germany / www.carus-verlag.com

edited by Reinhold Kubik

Generalbassbearbeitung:

Paul Horn

12

7 5 6 7 5 6 7 5 6

15

5 7 6 5 6

p

18

6 7 6

21

4 5 4

23

6 4 5 6 5 6 5

25

f

4 6

28

6 4 5 7 6 6 6 4

31

p *f* *p*

7 7^b 6 5^b

34

6 7 6 5 7 6 5 7 6 5 7 6 5

37

f

7 6

39

p

6 7 6

42

6 6 6 4 5 5

44

6 4 5 3 6 5 5 6

46

f

7 6 4 2 6

48

6

51

7 8 6 4 6 5

This system contains measures 51, 52, and 53. The right hand features chords and eighth notes, while the left hand has a bass line with fingerings 7, 8, 6, 4, 6, and 5.

54

6 4 5 6 6 5

This system contains measures 54, 55, and 56. The right hand has chords and eighth notes, and the left hand has a bass line with fingerings 6, 4, 5, 6, 6, and 5.

57

7b 6 5b 6 7 6 5 6

This system contains measures 57, 58, and 59. The right hand has chords and eighth notes, and the left hand has a bass line with fingerings 7b, 6, 5b, 6, 7, 6, 5, and 6.

60

6 7 6 5 5 7 6

This system contains measures 60, 61, and 62. The right hand has chords and eighth notes, and the left hand has a bass line with fingerings 6, 7, 6, 5, 5, 7, and 6.

63

5 2 6 *Fine* # 6

pp

This system contains measures 63, 64, and 65. The right hand has chords and eighth notes, and the left hand has a bass line with fingerings 5, 2, 6, and 6. The word "Fine" is written above the final measure, and a piano (*pp*) dynamic marking is present.

65

6 6 4 5 # 7 # 6 4

This system contains measures 65 and 66. The music is in a key with one flat (B-flat major or D minor). Measure 65 features a treble clef with a quarter note G4, a quarter rest, and a half note chord of F#4 and A4. The bass clef has a quarter note G2, a quarter rest, and a half note chord of F#2 and A2. Measure 66 continues with similar patterns, including a treble clef with a quarter note G4, a quarter rest, and a half note chord of F#4 and A4, and a bass clef with a quarter note G2, a quarter rest, and a half note chord of F#2 and A2.

67

7 # 6 4 7 6 6 5 b

This system contains measures 67 and 68. Measure 67 has a treble clef with a quarter note G4, a quarter rest, and a half note chord of F#4 and A4. The bass clef has a quarter note G2, a quarter rest, and a half note chord of F#2 and A2. Measure 68 features a treble clef with a quarter note G4, a quarter rest, and a half note chord of F#4 and A4, and a bass clef with a quarter note G2, a quarter rest, and a half note chord of F#2 and A2.

69

6 5+ b 7 # 6 5

This system contains measures 69 and 70. Measure 69 has a treble clef with a quarter note G4, a quarter rest, and a half note chord of F#4 and A4. The bass clef has a quarter note G2, a quarter rest, and a half note chord of F#2 and A2. Measure 70 features a treble clef with a quarter note G4, a quarter rest, and a half note chord of F#4 and A4, and a bass clef with a quarter note G2, a quarter rest, and a half note chord of F#2 and A2.

71

7 # 7 #

This system contains measures 71 and 72. Measure 71 has a treble clef with a quarter note G4, a quarter rest, and a half note chord of F#4 and A4. The bass clef has a quarter note G2, a quarter rest, and a half note chord of F#2 and A2. Measure 72 features a treble clef with a quarter note G4, a quarter rest, and a half note chord of F#4 and A4, and a bass clef with a quarter note G2, a quarter rest, and a half note chord of F#2 and A2.

74

6 5 2 5 b 6 6 4 # b # 7 7

P

This system contains measures 74 and 75. Measure 74 has a treble clef with a quarter note G4, a quarter rest, and a half note chord of F#4 and A4. The bass clef has a quarter note G2, a quarter rest, and a half note chord of F#2 and A2. Measure 75 features a treble clef with a quarter note G4, a quarter rest, and a half note chord of F#4 and A4, and a bass clef with a quarter note G2, a quarter rest, and a half note chord of F#2 and A2. A dynamic marking of *P* (piano) is present in measure 75.

77

7 7 6 6 4 5+ 6 5+ 6 7

80

6 6 6 6 4

82

7 7 6 4

84

6 6 5 6 6 5+ 6 4 5+

Da capo dal segno

2. Aria (Choral) e Recitativo

Basso continuo

f

tr

6 4 6 4 2 7 6 5 6 4

4

4 6 9 6 7 6 6 6 6 6 9 8

7

Herr, nun läs - sest du dei - nen Die - ner in
Lord, you let now your faith - ser vant de -

tr

6 4 2 7 6 5 6 4 6 6 9 6

11

rie - d - ren,
part it free - dom,

f

tr

7 6 5 4 6 4 6 6 5 7 5 7 6 5 6

15

4 2b b 6b 6 7 5 4 6 4 5 7 7

18

wie du ge-
ac - - - - - cord - ing

tr *p*

7^b 6 6
5 4 5

5 6 7 6 5

21

sa - get hast...
to your word...

tr *f* *tr*

7 6 6 6
4 4+ 5
2

4 3 5
2

25

5 6 7 4 6 4 6 6 7
2 2 5 5

28

Recitativo

Was uns als Men - schen schreck - lich
That which ap - pears to be but

p

7 5 3 4 5 6 6 6 6
2 5 9 8 5

4+
2

31

a tempo

scheint, ist uns ein Ein - gang zu dem Le - ben.
 grief has now be - come life's op - en por - tal.

34

Recitativo

Es ist der Tod ein En - de die - ser Zeit und N... ein
 For us then death is end - ing all of earth's... - tre

37

Pfand, das uns der F... ge - ge - ben zum Zei - chen, daß er's herz - lich meint und
 shows to... is mor - tal his love that strength - ens my be - lief. He

39

a tempo

uns will nach vollbrachtem Rin - gen zum Frie - den brin - - - gen.
 leads us out of life's hard strug - gle to peace e - ter - - - nal.

Recitativo

42

Und weil der Hei-land nun der
And since our eyes have seen the

6 6 5 4 3 5 6 4+ 2

45

Au - gen Trost, der Her - zen Lab - sal ist, was Wun - der, da ein
Sav - iour Lord, and God is ev - er near, why won - der tha

6 5 b 4+ 2

47

Herz der s - furcht ver - gißt! Es kann er - freut den Aus - spruch
heart can th free of fear? Most joy - ful - ly it does pro -

7b 6 4+ 3b

49 a tempo

tun: Denn mei - ne Au -
claim: For with my own

b 5 6b 6b 5 6 7b 5 2

gen
eyes

6 5 7 6 5 6 4 5b 6b 6 5b 4b 4 2

ha - ben de -
I have now seen

7 6 6 6 4+ 2 6 6 5 2 6b 2 4 7 6 7 b 6

ge - - hen,
- - - tion,

5 6 4 2b 7b 4 2 5 6 6 5 4 3 5 2 6

6 4 2 5 6 4b 6 7 b 6 4 2 6 5 6 6 5b 4 2

kern. _____
ple. _____

3. Aria (Tenore): Eile, Herz, voll Freudigkeit

Basso continuo *f stacc*

7

7 6 5 6 5 6 5b 7 5 6 6 4 5 3

Detailed description: This system contains measures 7 and 8. Measure 7 has a treble clef with a half note G4 and a bass clef with a half note G2. Measure 8 has a treble clef with a half note G4 and a bass clef with a half note G2. Fingerings are indicated by numbers 1-5 below the notes.

9

6 6 6 5

p

Detailed description: This system contains measures 9 and 10. Measure 9 has a treble clef with a half note G4 and a bass clef with a half note G2. Measure 10 has a treble clef with a half note G4 and a bass clef with a half note G2. A piano (*p*) dynamic marking is present in measure 10.

11

6 6 6 6 6 5 6 6 5 4 6

Detailed description: This system contains measures 11 and 12. Measure 11 has a treble clef with a half note G4 and a bass clef with a half note G2. Measure 12 has a treble clef with a half note G4 and a bass clef with a half note G2.

13

5 7 6 4 5 6

Detailed description: This system contains measures 13 and 14. Measure 13 has a treble clef with a half note G4 and a bass clef with a half note G2. Measure 14 has a treble clef with a half note G4 and a bass clef with a half note G2.

15

7 6 6 4 6 7 6 7 6 7 6 7 6

Detailed description: This system contains measures 15 and 16. Measure 15 has a treble clef with a half note G4 and a bass clef with a half note G2. Measure 16 has a treble clef with a half note G4 and a bass clef with a half note G2.

17

7 7 7 6 7 6 6 5

Detailed description: This system contains measures 17 and 18. Measure 17 has a treble clef with a half note G4 and a bass clef with a half note G2. Measure 18 has a treble clef with a half note G4 and a bass clef with a half note G2.

19

f *p*

6
4
2

7^b
5

6

6

6

5

6

21

f *p* *f*

6

7

6

6

7^b

4^b

3

8

6

6

7[#]

23

p

6

6

7[#]

9

8

6

6

6

6

6

5

25

7

6

6

4

2

6

5

7

5

27

6^b

6

6

6

6

6

7^b

29

6

6

5

6

6

6

5

6

43

7^b 6 5 6 6 4 2

45

6 5^b 6 5 6 5 6 5 # # 7

47

6 5 6^b 5 3 # 5 7^b 6 7 6

49

7 # 7 # 7 7 7 7

51

6 6^b 6^b 6^b 7 # 5 7 5

53

6 5^b 6 6 5 6 4⁺ 7 5 6 4 #

Da capo

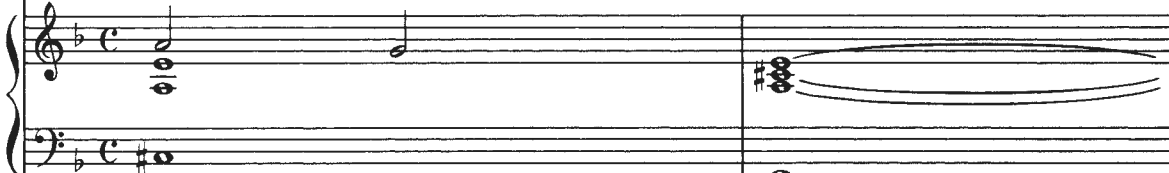
4. Recitativo

Alto



Ja, merkt dein Glau - be noch viel Fin - ster - nis, dein Hei - land kann der
 Yes, when your trust is dark with doubtful - ness, your Sav - iour can dis -

Basso continuo



6 5 6 4+ 2

3



Zwei - fel Schat - ten tren - nen, ja, wenn des Gra - bes Nacht die letz - te
 perse those clouds of doubt - ing! Yes, when the night of death gulfs th



4+ 2 7b 5

5



Stun - de schreck - lich ma so wirst du doch ge - wiß sein hel - les
 fi on ear you still will nev - er miss his ra - diant

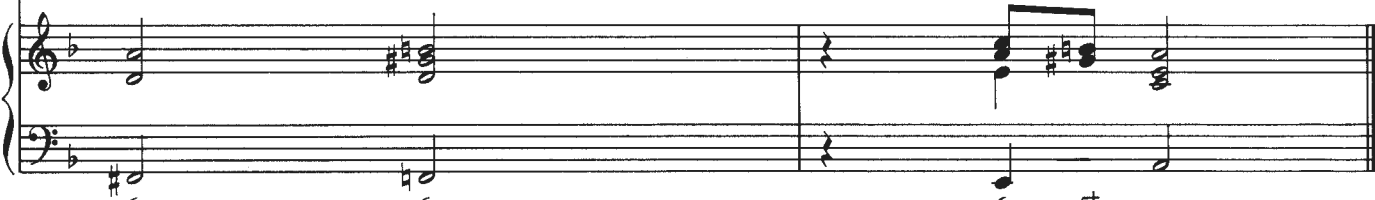


6 4+ 2

7



Licht im To - de selbst er - ken - nen.
 light, should death it - self be hov'r - ing.



6 6 4+ 2 6 4 5+

5. Choral: Es ist das Heil und selig Licht

Basso continuo

6 5 6 6 5 6 # 6 6 4 2 5 6 5 #

6 6 6 6 5 6 6 6 5

6 5 6 5b 6 b 6 4 2+ # 7 # 6 5 7 4 2 #