

# II. Requiem.

## Introitus.

Jos. Renner, Op. 45.

Sopran.  
Alt.

Bass.

Re-qui-em æ - ter-nam do-na e - is Do-mi-ne et lux per-

*p* *mf*

This system shows the vocal entries for Soprano, Alto, and Bass. The Soprano and Alto parts are in a higher register, while the Bass part is in a lower register. The lyrics are 'Re-qui-em æ - ter-nam do-na e - is Do-mi-ne et lux per-'. Dynamics include piano (*p*) and mezzo-forte (*mf*).

pe - tu - a

pe - tu - a lu - ce - at e - is. aus De-us in

This system continues the vocal lines. The lyrics are 'pe - tu - a lu - ce - at e - is. aus De-us in'. The music features various note values and rests, with dynamics like *p* and *mf*.

Si - on et ti - o - tum in Je - ru - sa - lem: ex - au - di, ex -

This system continues the vocal lines. The lyrics are 'Si - on et ti - o - tum in Je - ru - sa - lem: ex - au - di, ex -'. The music includes dynamic markings like *p* and *mf*.

an - ra - ti - o - nem me-am, ad te, ad te omnis

This system continues the vocal lines. The lyrics are 'an - ra - ti - o - nem me-am, ad te, ad te omnis'. The music includes dynamic markings like *p*.

et lux per - pe - tu - a

*p* Re-qui-em æ - ter-nam do-na e - is Do-mi-ne *mf* et lux per - pe - tu - a *mf*

lu - ce - at e - - is. *pp* Ky - ri - e e - lei - son, Ky - ri - *p*

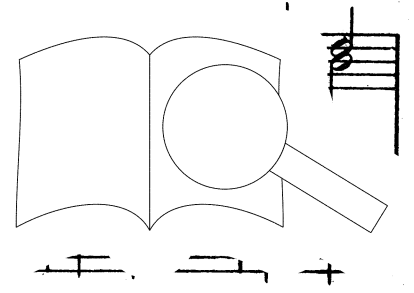
*mf* Ky - ri - e e - lei - son. *p* Christe e - lei - son. e Christe e - lei - son. *mf*

*pp* Ky - ri - e e e - lei - son, *p* Ky - ri - e e - lei - son. *pp*

**Graduale (CHORAL).**

**Tractus.**

Ab - sol - ve Do - mi - ne a - ni - mas o - mni - um



cto-rum ab o-mni vin-cu-lo de-lic-to-rum. Et gra-ti-a tu-a

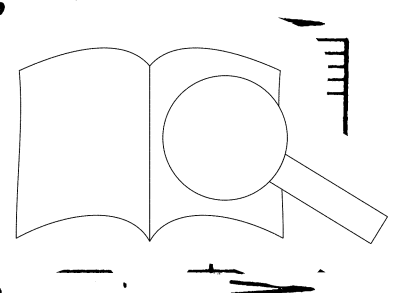
il-lis succur-ren-te me-re-an-tur e-va-de-re ju-di-ci-um ul-ti-

Et lu-cis æ-ter-næ be-a-ti-tu-di-nis fru-i.

Die

Do-mi-ni ste Rex glo-ri-æ li-be-ra a-ni-mas

um fi-de-li-um defun-ctorum de-pœ-nis in-fer-ni



li-be-ra e-as de o-re le-o-nis, ne ab-sor-be-at e-as tar-ta-rus, ne

ca-dant in obs-cu-rum: sed si-gni-fer sanctus Mi-cha-el re-præ-

*ritard.* *f a tempo*

lu-cem san-ctam. Quam o-lim a-sti et se-mi-ni

e - pre-ces ti-bi, Do-mi-ne, lau-dis of-fe-ri-mus

u su-sci-pe pro a-ni-ma-bus il-lis qua-rum ho-

fa - ci - mus: fac e - as Do - mi - ne, de mor - te tran - si - re ad vi -

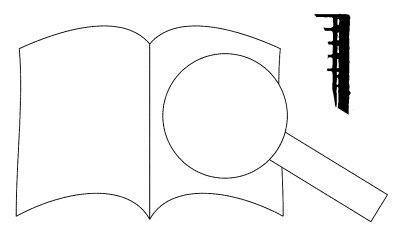
tam. Quam o - lim A - brahæ promi - si - sti et se - mi - ni e -

**Sanctus.**

Sanctus, Sanctus, San - ctus Do - Sa - ba - oth.

Ple - ni su - er - ra glo - ri - a, glo - ri - a

a. Ho - san - na in ex - cel - sis, Ho - san - na



# Benedictus.

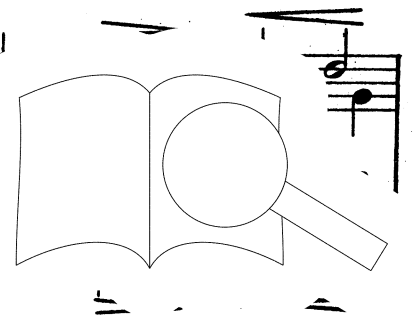
Be - ne - di - ctus qui ve - nit in no - mi - ne

Do - mi - ni, Be - ne - di - ctus qui ve - nit i

Do - mi - ni. Ho - san - na in ex - cel - sis

col - lis pec - ca - ta mun - di do - na e - is

qui - em. A - gnus De - i qui tol - lis pec



e - is re - qui - em. A - gnus De - i qui tol - lis pec - ca - ta mun - di

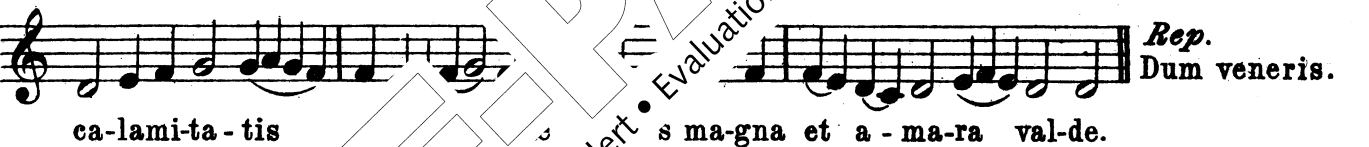
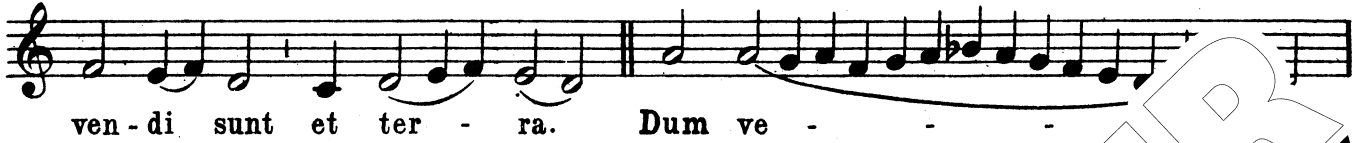
do - na e - is re - qui - em sem - pi - ter - nam. Lu

lu - ce - at e - is, Do - mi - ne, cum Sanctis tu - is pi - us es.

Re - qui - em æ et lux per - pe - tu - a  
is Do - mi - ne et lux per - pe - tu - a

is. Cum Sanctis tu - is in æ - ternum

# Libera.



- R.** Et lux perpetua luceat ei (eis).
- ¶** Requiescat in pace.
- R.** Amen.